



INFORMATIONS FOR EXHIBITORS AND SPONSORS

Palais des Congrès
September 4 - 8, 2022
Bordeaux, France



*Innovative Biomaterials and
Translational Research*

For more information please visit esb2022.org



It is our pleasure to invite you to the 32nd Annual Conference of the European Society of Biomaterials which will take place from September 4 to 8, 2022 in Bordeaux, France, **as a face-to-face event**. After these difficult years, with restricted travels, we are excited to host this meeting **by re-engaging in rich scientific and informal exchanges** between attendees.

All ESB meetings attracted a **remarkably multidisciplinary group of participants as they bring together at a same and unique place**, researchers from various fields including chemistry, physics, biology, biomaterial science, tissue engineering and medicine. As a sponsor of the meeting, you can **address various markets as well as understand the current needs and trends in these fields**. It is also a unique opportunity to **share your most recent technological developments in terms of tools and services**. This meeting also provides an environment that is designed to foster innovative and collaborative thinking.

As a result, this meeting is an **ideal platform to find new collaborators to develop the technological advances of tomorrow**. With over 1000 participants expected from all European countries, but also many distinguished guests from around the world, the ESB meeting is the first scientific event to reach the European Biomaterials and Regenerative Medicine scientific community.

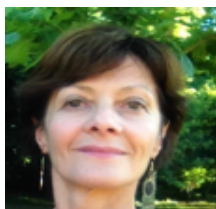
One of the key missions of ESB meetings is to promote interactions between basic researchers, applied scientists, clinicians, and industry to drive the development of innovative solutions for clinical applications. We keenly understand that these new solutions to repair or produce tissues or organs will come from the combination of fundamental knowledge, multidisciplinary development efforts, as well as advances in production/analytic/imaging/communication tools. Accordingly, **your participation to this meeting is crucial to promote the translation of our scientific activity into clinical reality with added value for all stakeholders**.

We offer attractive sponsoring packages that combine various ways to be recognized a leader in your field (see pages 5-7). In addition, various sponsoring options are available to reach attendees (page 8), and **we remain open to specific sponsoring options to meet your needs**.

Bordeaux has its own international airport and is easily accessible from the biggest European hubs (Paris, Amsterdam, London, Madrid, Rome). It is connected to Paris by a TGV train (2 hours). The meeting venue is the *Palais des Congrès*. This spacious meeting space is located in northern Bordeaux and connected to the city center by a state-of-the-art tramway system. Booths of various sizes are available for rental. They will sit at the heart of the meeting where coffee, food and poster will be located. Boasting exceptional classical and modern architecture, and surrounded by the most famous vineyards in the world, Bordeaux is a perfect symbol of the French "Art of Living".

Please come and join us at the ESB 2022 meeting to share your ideas and discover our hospitality.

Kindest regards



Joëlle Amédée, Chair



Jean Christophe Fricain, Co-chair



Didier Letourneur, Co-chair



Conference Venue and preliminary scientific program

The Palais des Congrès, Bordeaux, is located in front of the Bordeaux Lake district, which offers an environment between nature and conviviality. This congress center is directly accessible by tramway from the St Jean Rail Station in 30 minutes and from the City Centre in 20 min. Accommodations, more than 1400 rooms, are within walking distance of Conference venue.



Palais des Congrès
Avenue Gabriel
Domergues
33300 BORDEAUX, France

The Palais des Congrès offers all facilities and technical requirements for hosting large international conferences and promoting interactive discussions in various auditorium and halls at the two levels.

Preliminary program

SUN. 4 SEPT.	MON. 5 SEPT.	TUE. 6 SEPT.	WED. 7 SEPT.	THU. 8 SEPT.
	Registration 08:00-08:30			
	Plenary Lecture 08:30-09:15 Award (Jean Leray Award) 09:15-10:00 Coffee Break & Posters 10:00-10:45 Parallel Sessions S1, S2, S3, S4, S5 10:45-12:30 Technological Session 1 45 min 10:45-11:30 Technological Session 2 60 min 11:30-12:30	Plenary Lecture 08:30-09:15 Award (George Winter Award) 09:15-10:00 Coffee Break & Posters 10:00-10:45 Parallel Sessions S12, S18, S19, S20, S16 10:45-12:30 Technological Session 3 45 min 10:45-11:30 Technological Session 4 60 min 11:30-12:30	Plenary Lecture 08:30-09:15 Award (Klaas de Groot Award) 09:15-10:00 Coffee Break & Posters 10:00-10:45 Parallel Sessions S24, S25, S26, S27, S28 10:45-12:45 European Projects Symposium 12:45-13:15 General Assembly ESB 12:15-13:15	Parallel Sessions S41, S42, S43, S44, S45, S46 08:30-09:45 Coffee Break & Posters 09:45-10:30 Parallel Sessions S47, S48, S49, S50, S51, S52 10:30-12:15 Closing Ceremony 12:15-12:45 End of the Conference 12:45-13:00 Lunch Boxes 13:00
	Lunch Break & Meetings with Industrials and Professors 12:30-13:30			
	Poster Session 1 13:30-14:30 Award (International Award) 14:30-15:15 Parallel Sessions S6, S7, S8, S9, S10, S11 15:30-16:30 Coffee Break & Posters 16:30-17:15 Parallel Sessions Canadian society Chinese Society South American Society Royal Society & Biomaterial Science Korean Society Biomat Society 17:15-18:45 End of the Sessions 18:45	Poster Session 2 13:30-14:30 Plenary Lecture (Clinical Applications) 14:30-15:15 Parallel Sessions S17, S18, S19, S20 15:30-16:30 Coffee Break & Posters 16:30-17:15 Parallel Sessions S21, S22, S23 17:15-18:15 Workshop Young Scientist 17:45-18:15 Clinical Session 2 17:15-18:15 Transnational Session 2 17:15-18:15 General Assembly Young Scientist Forum 18:30-19:30 End of the Sessions 19:30 Young Scientist Forum's Night 20:15	Lunch Break & Posters 13:15-14:15 Fellow Contest 14:15-15:30 Parallel Sessions S29, S30, S31, S32, S33, S34 15:45-16:30 Coffee Break & Posters 16:45-17:15 Parallel Sessions S35, S36, S37, S38, S39, S40 17:15-18:15 End of the Sessions 18:15 Bus Departures for Gala Diner 18:30-19:00 Return to the Congress Center or in Town 00:00	
Registration 14:00-16:00 Workshop Young Scientist 14:00-16:00 Registration & Coffee Break 16:00-17:30 Welcome Ceremony 17:30-18:00 Opening Lecture 18:00-19:00 Welcome Reception 19:00-21:00				



How to reach Bordeaux ?

Bordeaux is located in South West of France, accessed by visitors from all countries from Europe.

By plane: The international airport Bordeaux Merignac is connected to 5 of the biggest European hubs (Paris Charles de Gaulle (1:20 hour by flight), Amsterdam, London, Madrid, Lisbon, Rome....). It provides more than 80 direct connections in Europe and a direct flight to Canada.

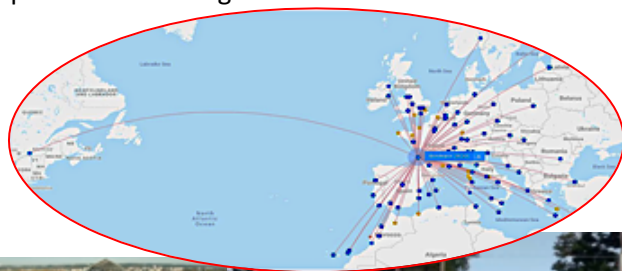
By train: Bordeaux can be easily reached by train from everywhere in France (2 hours from Paris) (<https://www.oui.sncf/>)

Public transportation in Bordeaux: Within Bordeaux, a modern and efficient public transportation system with trams and buses is available.

From the airport, guests can take the bus connecting the airport with the City Centre (30 min).

From the City Centre: Tramway C and stop at "Parc des Expositions / Nouveau stade".

From the rail station: Tramway C and stop at "Parc des Expositions / Nouveau stade"



1. Accommodation

With more than 14 000 rooms in 200 hotels, Bordeaux displays a large choice of hotel rooms (from 2★ to 5★), in downtown (1); close to the Palais des Congrès (less than 5 minutes by foot; (2); 1 400 hotel rooms close to the airport (3); or the rail station (4).

1 Downtown: 3 950 rooms

1. 213 rooms 5★
2. 955 rooms 4★
3. 1 030 rooms 3★
4. 911 rooms 1 to 2★
5. 841 flats 3 to 4★

2 Close to the Palais des Congrès: 1 400 rooms

6. 441 rooms 4★
7. 364 rooms 3★
8. 180 rooms 1 to 2★
9. 200 apartments 3★

3 Merignac Airport : 2 220 rooms

10. 361 rooms 4★
11. 399 rooms 3★
12. 716 rooms 1 to 2★
13. 654 apartments 3 to 4★

4 Rail station: 275 rooms 4★

Palais des Congrès

After your online registration, please book your favorite room directly in the hotel. If there is any way we can be of assistance regarding the booking process please do not hesitate to contact us:

contact@esbbordeaux2022.org



Industrial Exhibition

Companies and organizations are cordially invited to present their services and products at the ESB 2022 conference.

The exhibition will take place from Sunday 4, September till Thursday, 8 September at the Palais des Congrès de Bordeaux, close to the Plenary Session auditorium and connected to all Parallel sessions.

Poster sessions, coffee breaks and lunches of the conference are located in the same area to encourage interactions between the industrial exhibition and the conference participants.

The purpose of the exhibition program is to present products and/or services relevant to the participant's professional interests. The exhibitors should emphasize instruments, products or services for use in teaching and research, books and other publications in scientific fields of relevance to the interests of the participants.

Four sessions dedicated to technological aspects (5th and 6th September) supported by companies will be organized during the ESB 2022 conference. If you plan to present in one of these sessions through flash presentations, your expertise, materials, instruments and their applications, please submit your proposal to the organizers (see the application form pages 14-15).

For all questions please contact: contact@esbbordeaux2022.org

Please note an attractive sponsorship with competitive price for small start-up (less than 10 employees): EUR 1 500

Sponsoring Packages

Gold EUR 15.000

- Exhibition space, max. 12 sq. m.
- 3 full conference registrations* and tickets to the Gala Dinner
- Limit of 2 additional persons per exhibitor registration** at a reduced rate of € 250.00
- Your company will be acknowledged as "Gold sponsor" in the final program
- A priority to participate to the Technological sessions during the Conference
- Full color page advertisement inside page in the Final program
- Your logo on the ESB 2022 official website
- 1 link on the conference official website with redirection to your website
- Company description (10 lines & logo) in the final program distributed to all delegates
- On-site Placement of company banner

Silver EUR 10.000

- Exhibition space, max. 9 sq. m.
- 2 full conference registrations* and tickets to the Gala Dinner
- Limit of 2 additional persons per exhibitor registration** at a reduced rate of € 250.00
- Your company will be acknowledged as "Silver sponsor" in final program
- Full color page advertisement on inside page in the Final program
- Your logo on the ESB 2022 official website
- 1 link on the conference official website with redirection to your website
- Company description (10 lines & logo) in the final program distributed to all delegates



Bronze EUR 5.000

- Exhibition space, max. 6 sq. m.
- 1 full conference registration* and ticket to the Gala Dinner
- Limit of 1 additional person per exhibitor registration** at a reduced rate of € 250.00
- Your company will be acknowledged as “Bronze Sponsor” in final program
- Full color page advertisement on inside page in the Final program
- Your logo on the ESB 2022 official website
- 1 link on the conference official website with redirection to your website
- Company description (10 lines & logo) in the final program distributed to all delegates

* Registration includes entrance to all regular sessions, coffee breaks, lunches, welcome reception

** access only to the exhibition hall

General Information

Conference Chair

Dr Joëlle Amédée
University of Bordeaux, Inserm U1026
Tissue engineering Laboratory (BIOTIS)
Bordeaux France

Co-Chairs

Pr Jean Christophe Fricain
University of Bordeaux, Inserm U1026
Tissue engineering Laboratory (BIOTIS)
Bordeaux, France

Dr Didier Letourneur
University of Paris, University Sorbonne Paris Nord, Inserm U1148
Laboratory for Vascular and Translational Science (LVTS)
Paris, France

Organizing Secretariat

ESB 2022 Congress Organization
BORDEAUX EVENTS
Congrès et Expositions de Bordeaux
Rue Jean Samazeuilh – CS 20088
33070 Bordeaux Cedex, France
Phone: +33 (0)6 88 61 34 47
E-Mail: contact@esbbordeaux2022.org

Expected number of participants

Approx. 1200 participants

Conference language

English

Venue

Palais 2 L’Atlantique, Bordeaux Lac

Conference webpage

www.esb2022.org